

DEVISO 20 24

Garderoben-System *Hallway furniture system*



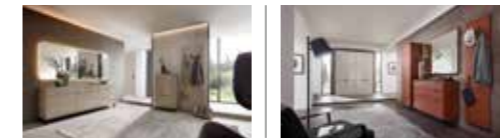


Legende Legend

Breite <i>Width</i>	
Höhe <i>Height</i>	
Tiefe <i>Depth</i>	
Lack matt <i>Lacquer matt</i>	
Lack hochglänzend <i>High-gloss lacquer</i>	
Holz <i>Wood</i>	

Stoff <i>Fabric</i>	
Leder <i>Leather</i>	
Griff <i>Handle</i>	
Klarglas <i>Clear glass</i>	
Satiniertes Glas <i>Frosted glass</i>	

Planungsbeispiele *Planning examples*



4–45

4–7

8–11

12–17

18–21 | 22–23

24–29

30–33

34–35

36–37 | 38–41

Exterior – stilgebende Elemente *Exterior – style elements*

Material, Oberfläche & Farbe *Materials, finish & colour* 42–44

Griffe *Handles* 43

Stoff- und Lederkollektionen *Upholstery collections* 44




Beispielartikel *Sample articles* 45

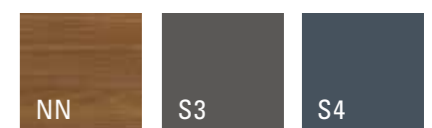
Interior – Komfort und Ausstattung *Interior – Comfort and features* 46–47

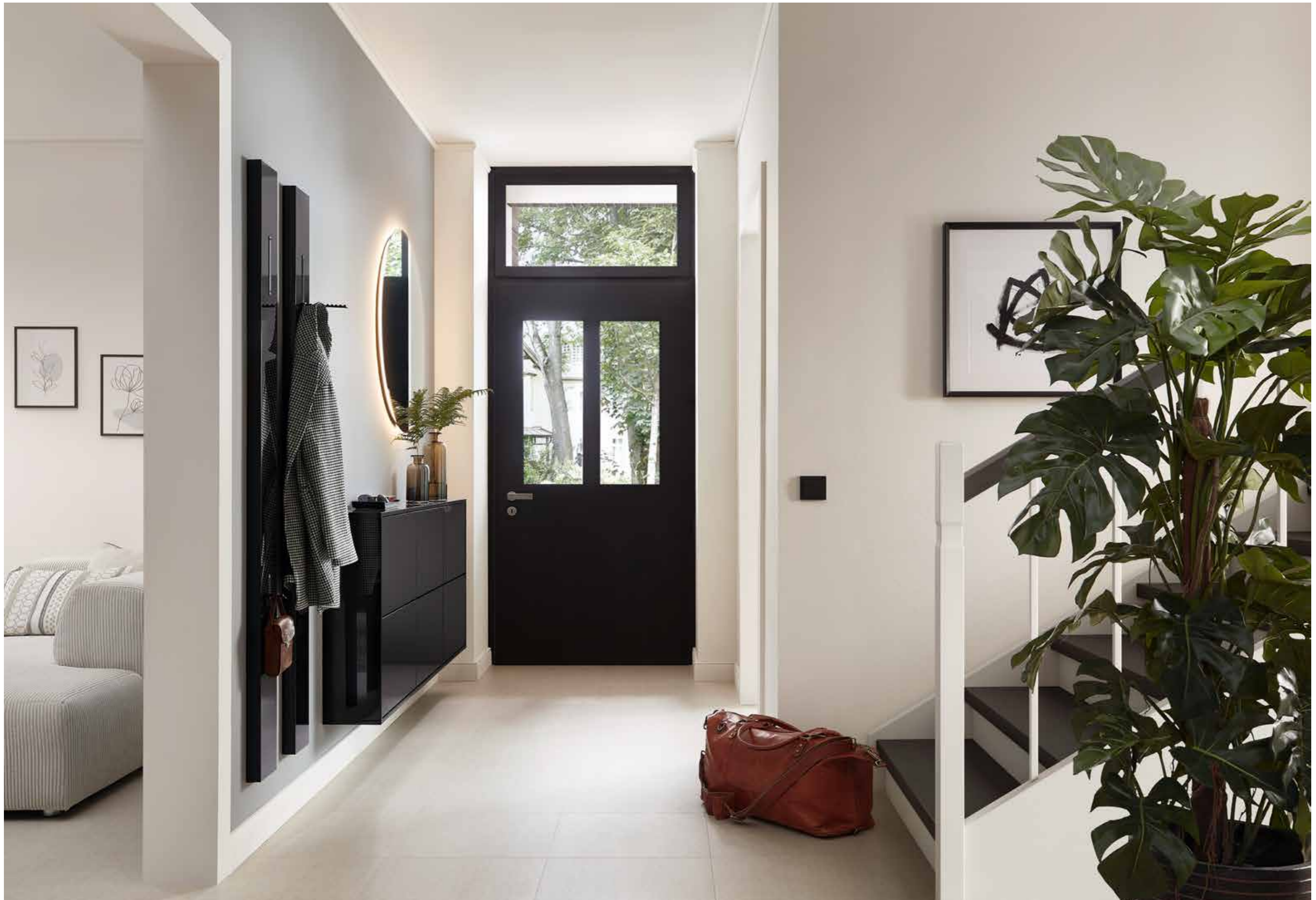




4-7

- 67049 Garderobenkombination *Hallway combination*
 ↳ 196,6 cm ↳ 216,9 cm ↳ 39,6 cm
 NN – Nussbaum Nova *Walnut nova* 
 S3 – Lack Schiefergrau *Slate grey lacquer* 
 ↳ Push to open *Push to open*
- 67050 Hängeschuhschrank *Hanging shoe cabinet*
 ↳ 225,0 cm ↳ 59,4 cm ↳ 39,6 cm
 S3 – Lack Atlantikblau *Atlantic blue lacquer* 
 ↳ Push to open *Push to open*







8-11

- 2×91875 Hänge-Paneelstollen *Hanging panel*
 ↳ 15,0cm ↳ 176 cm ↳ 19,0cm
 LS – Lack Schwarz HG *Black lacquer HG* ✕
 ↳ Push to open *Push to open*
- 67051 Hängeschuhschrank *Hanging shoe cabinet*
 ↳ 183,2 cm ↳ 73,6 cm ↳ 20,4 cm
 LS – Lack Schwarz HG *Black lacquer HG* ✕
 ↳ Push to open *Push to open*
- 85379 Wandspiegel *Wall mirror*
 ø 90cm ↳ 2,5 cm







12-13

85379 Wandspiegel *Wall mirror*
 ↳ 180,0cm ↳ 88,0 cm ↳ 2,5 cm

68362 Hängesideboard *Hanging sideboard*
 ↳ 183,2 cm ↳ 20,8 cm ↳ 39,6 cm
 R6 – Lack Seidengrau HG *Silk grey lacquer HG* ✕
 ↳ Push to open *Push to open*

87973 Hängeelement *Hanging element*
 +76746 Hänge-Paneelstollen *Hanging panel*
 ↳ 63,2+ 15,0 cm ↳ 179,2 cm ↳ 20,4 cm
 R6 – Lack Seidengrau HG *Silk grey lacquer HG* ✕
 ↳ Push to open *Push to open*

14-15

2x 76746 Garderobenelement *Hallway panel*
 ↳ 15,0 cm ↳ 176,0 cm ↳ 19,0 cm
 R6 – Lack Seidengrau HG *Silk grey lacquer HG* ✕
 ↳ H4 – Chrom glänzend *Shiny chrome*

85379 Wandspiegel *Wall mirror*
 ↳ 180,0 cm ↳ 88,0 cm ↳ 2,5 cm

68362 Hängesideboard *Wall sideboard*
 ↳ 183,2 cm ↳ 20,8 cm ↳ 39,6 cm
 R6 – Lack Seidengrau HG *Silk grey lacquer HG* ✕
 ↳ Push to open *Push to open*

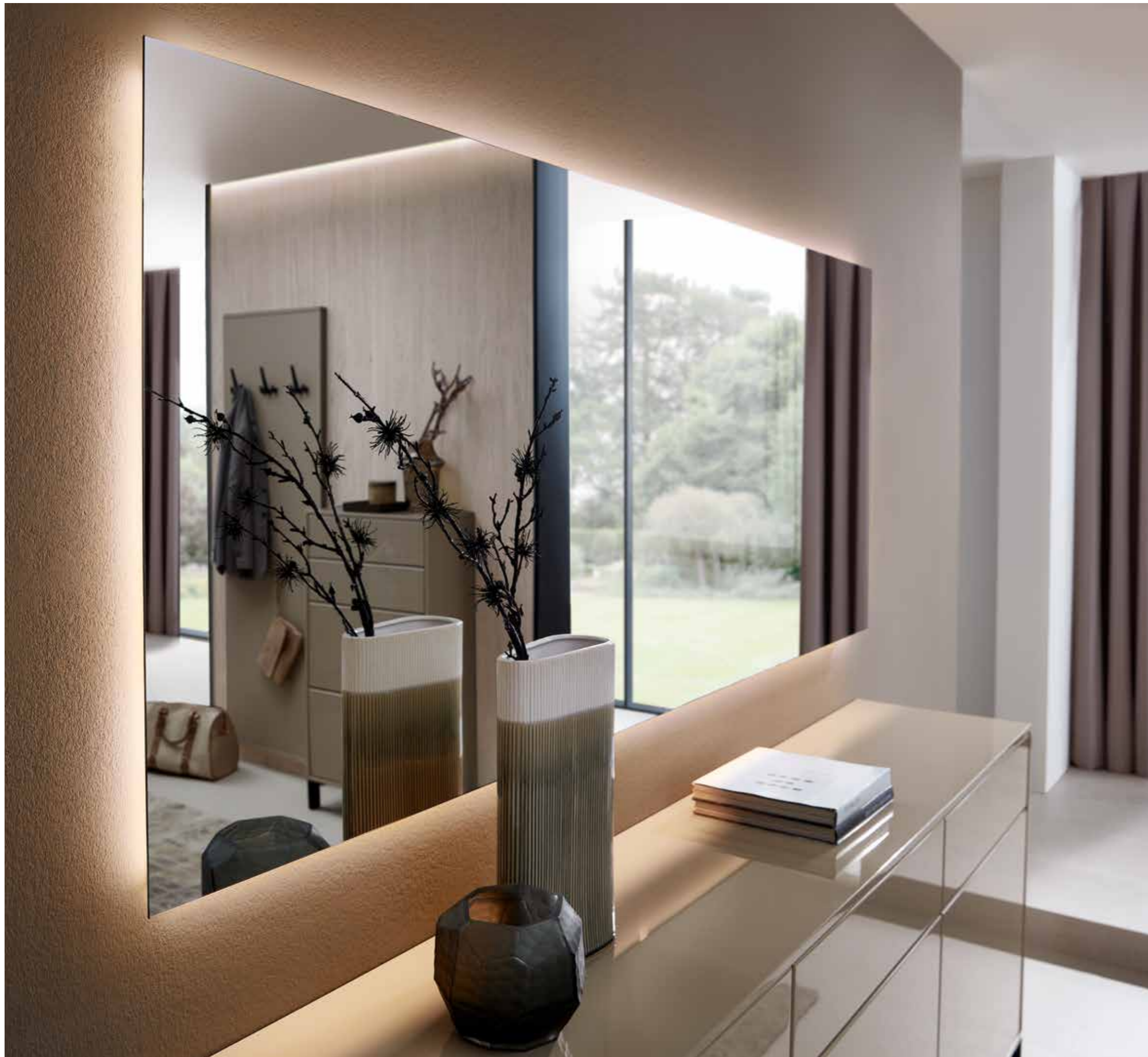
16-17

87973 Hängeelement *Hanging element*
 +76746 Hänge-Paneelstollen *Hanging panel*
 ↳ 63,2+ 15,0 cm ↳ 179,2 cm ↳ 20,4 cm
 R6 – Lack Seidengrau HG *Silk grey lacquer HG* ✕
 ↳ Push to open *Push to open*

R6







18-21

85382 Wandspiegel *Wall mirror*
 ↳ 225,0 cm ↳ 88,0 cm ↳ 2,5 cm

freie Sideboard *Sideboard*
 Planung ↳ 228,2 cm ↳ 85,3 cm ↳ 39,6 cm
 ↳ R4 – Lack Cashmere HG *Grey lacquer HG*
 ↳ Push to open *Push to open*

69952 Garderobenkombination *Hallway combination*
 ↳ 136,6 cm ↳ 208,5 cm ↳ 30,0 cm
 ↳ R4 – Lack Cashmere HG *Grey lacquer HG*
 ↳ Push to open *Push to open*





22-23

69951 Schuhschrank *Shoe cabinet*
 ↗ 183,2 cm ↘ 217,3 cm ↖ 39,6 cm
 R5 – Lack Brillant HG *Diamond grey lacquer HG*
 H8 – Schwarz matt *Black matt*



69968 Garderobenkombination *Hallway combination*
 ↗ 256,6 cm ↘ 179,2 cm ↖ 39,6 cm
 R8 – Lack Oxidrot *Oxide red lacquer*
 H8 – Schwarz matt *Black matt*









24–25

32512 Wandspiegel rund *Wall mirror round*
 ↗ 90,0 cm

75955 Hängeschuhschrank *Hanging shoe cabinet*
 ↗ 123,2 cm ↗ 73,6 cm ↗ 39,6 cm
 R3 – Lack Olivgrau *Olive grey lacquer*
 ↘ Push to open *Push to open*

69413 Garderobenkombination *Hallway combination*
 ↗ 136,6 cm ↗ 196,8 cm ↗ 30,0 cm
 R3 – Lack Olivgrau *Olive grey lacquer*
 ↘ Push to open *Push to open*

26–27

83277 Funktionstisch *Functional table*
 ↗ 153,2 cm ↗ 77,5 cm ↗ 39,6 cm
 LW – Lack Weiß *White lacquer*
 ↘ Push to open *Push to open*

32512 Wandspiegel *Wall mirror*
 ↗ 150,0 cm
 LW – Lack Weiß *White lacquer*

2× 76746 Garderobenelement *Hallway panel*
 ↗ 15,0 cm ↗ 176,0 cm ↗ 19,0 cm
 LS – Lack Schwarz HG *Black lacquer HG*

28–29

69970 Garderobenkombination *Hallway combination*
 ↗ 186,4 cm ↗ 217,3 cm ↗ 39,6 cm
 LW – Lack Weiß *White lacquer*
 6B – Stoff *Fabric Willow Powder*
 ↘ Push to open *Push to open*







30-31

- 2x 76217 Paneelstollen *Wall panel*
 ↕ 15,0 cm ↕ 193,6 cm ↕ 13,2 cm
 P9 – Lack Agave *Agave lacquer* ◇
- 75955 Hängeschuhschrank *Hanging shoe cabinet*
 ↕ 120,0 cm ↕ 73,6 cm ↕ 39,6 cm
 P9 – Lack Agave *Agave lacquer* ◇
 ↕ Push to open *Push to open*
- 32510 Wandspiegel *Wall mirror*
 ↕ 120,0 cm ↕ 91,2 cm ↕ 4,4 cm
 P9 – Lack Agave *Agave lacquer* ◇

32.1

- 68008 Highboard *Highboard*
 ↕ 243,2 cm ↕ 120,5 cm ↕ 39,6 cm
 AN – Eiche Graphit *Graphite oak* ◇
 P9 – Lack Agave *Agave lacquer* ◇
 ↕ Push to open *Push to open*

32.2

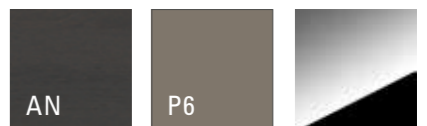
- 68008 Highboard *Highboard*
 ↕ 243,2 cm ↕ 120,5 cm ↕ 39,6 cm
 AN – Eiche Graphit *Graphite oak* ◇
 P9 – Lack Agave *Agave lacquer* ◇
 ↕ H4 – Chrom glänzend *Shiny chrome*





34-35

68057 Garderobenkombination *Hallway combination*
 ↳ 271,6 cm ↳ 217,3 cm ↳ 39,6 cm
 AN – Eiche Graphit *Oak graphite*
 P6 – Lack Taupe HG *Taupe lacquer HG*
 ↳ Push to open *Push to open*



AN

P6



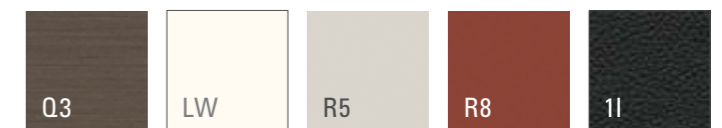
36-37

83274 Funktionstisch *Functional table*
 ↗ 123,2 cm ↘ 77,5 cm ↖ 30,0 cm
 R5 – Lack Brillantgrau HG *Diamond grey lacquer HG* ✖
 ↘ Push to open *Push to open*

83280 Wandspiegel *Wall mirror*
 Ø 90,0 cm

69737 Korpuselement mit Metallgestell
Carcass element with Metallgestell
 ↗ 93,2 cm ↘ 139,7 cm ↖ 39,6 cm
 R8 – Lack Oxidrot *Oxide red lacquer* ✖
 ↘ Push to open *Push to open*

69738 Garderobenkombination *Hallway combination*
 ↗ 303,2 cm ↘ 260,0 cm ↖ 39,6 cm
 LW – Lack Weiß *White lacquer* ✖
 Q3 – Feinschliff Grigio *Fine sanded grigio* ✖
 ↘ 1I – Leder *Leather* *Hermes Nero* ✖
 ↘ Push to open *Push to open*
 Schwarz matt *Black matt*



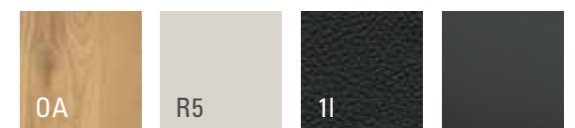




38-41

32518H Hängespiegelpaneel *Hanging mirror panel*
 ↳ 60,0 cm ↳ 196,8 cm ↳ 4,4 cm
 R5 – Lack Brillantgrau HG *Diamond grey lacquer HG* ✕

69732 Garderobenkombination *Hallway combination*
 ↳ 289,0 x 282,8 cm ↳ 260,0 cm ↳ 39,6 cm
 R5 – Lack Brillantgrau HG *Diamond grey lacquer HG* ✕
 R5 – Lack Brillantgrau *Diamond grey lacquer* ◇
 OA – Asteiche *Knotty oak* ◊
 11 – Leder *Leather Hermes Nero* ◊
 ↳ Push to open *Push to open*





Front + Korpus Front + Carcass

- | | | | |
|--|---|---|---------------------------------------|
| LW Lack Weiß <i>white lacquer</i> | LC Lack Crema <i>crema lacquer</i> | R6 Lack Seidengrau <i>silk grey l.</i> | S1 Lack Macchiata <i>macchiata l.</i> |
| R4 Lack Cashmere <i>cashmere l.</i> | R3 Lack Olivgrau <i>olive grey l.</i> | R5 L. Brillantgrau <i>diamond grey l.</i> | LY Lack Grau <i>grey lacquer</i> |
| LH Lack Platingrau <i>platinum grey l.</i> | P6 Lack Taupe <i>taupe lacquer</i> | LT Lack Terra <i>terra lacquer</i> | R2 Lack Espresso <i>espresso l.</i> |
| S6 Lack Cognac <i>cognac lacquer</i> | R7 Lack Rosewood <i>rosewood l.</i> | R8 Lack Oxidrot <i>oxide red l.</i> | DR Lack Dark Red <i>dark red l.</i> |
| S2 Lack Marill <i>marill lacquer</i> | S5 L. Piniengrün <i>pine green l.</i> | P9 Lack Agave <i>agave lacquer</i> | P8 Lack Ocean <i>ocean lacquer</i> |
| S4 L. Atlantikblau <i>atlantic blue l.</i> | S3 L. Schiefergrau <i>slate grey l.</i> | LG Lack Graphit <i>graphite lacquer</i> | LS Lack Schwarz <i>black lacquer</i> |

Alle Lacke auch in Hochglanz erhältlich
All finishes are also available in high-gloss type



- | | | | |
|---------------------------------------|---|--------------------------------------|-------------------------------------|
| BC Kristallbuche <i>Beech crystal</i> | ES Eiche Sand <i>Sand oak</i> | OA Asteiche <i>Knotty oak</i> | BK Kernbuche <i>Beech heartwood</i> |
| NN Nussbaum Nova <i>Walnut nova</i> | OB Asteiche Bourbon <i>Knotty oak bourbon</i> | AN Eiche Graphit <i>Graphite oak</i> | |

DeeLine

In allen Holz- und Lackausführungen erhältlich. Mögliche Bauteile entnehmen Sie bitte der Preisliste.
Available in all wood and lacquer finishes. Please refer to the price list for possible components.

Beispielausführungen Example designs



Akzentausführung: Feinschliff Accent finishes: Fine sanded



Griffe Handles

Die Griffe sind außerdem in allen 24 Lackfarben erhältlich.
The handles are also available in all 24 lacquer colours.



- | | | | | |
|--|--|---|---|---|
| H4 – Griff Chrom glänzend
Handle Shiny chrome | H8 – Griff Schwarz matt
Handle Black matt | H5 – Griff Edelstahlfarbig
Handle Stainless steel look | Z6 – Griff Anthrazit
Handle Anthrazite | U1 – Griff Weiß matt
Handle White matt |
| H4 – Knopf Chrom glänzend
Knob Shiny chrome | H8 – Knopf Schwarz matt
Knob Black matt | H5 – Knopf Edelstahlfarbig
Knob Stainless steel look | Z6 – Knopf Anthrazit
Knob Anthrazite | U1 – Knopf Weiß matt
Knob White matt |

Leder HERMES Leather HERMES

1A – Bianco	1P – Djerba	1B – Ivory	1S – Betulla	1N – Sand	1G – Mocca	1L – Lever
1K – Choco	1T – Smog	1I – Nero	1H – Bruin	1M – Anthracite	1R – Merlin	1D – Bordo
1C – Red	1U – Cotto	1Q – Yellow	1F – Verde	1E – Oceanblue	1W – Whale	

Vegane Lederalternative PURE Vegan leather alternative PURE

7A – Almond	7B – Camel	7C – Cognac	7D – Reed	7E – Cool Grey	7F – Eukalyptus	7G – Lake
7H – Concrete	7I – Stone	7J – Midnight				

Velours CLOUD Velours CLOUD

4E – Salt	4D – Beige	4K – Toffee	4J – Wood	4I – Steel	4L – Coffee	4B – Stonecrop
4P – Jade	4G – Bottle	4F – Breeze	4Q – Iceblue	4R – Greyblue	4S – Coral	4T – Rust
4A – Ember						

Flachgewebe OCEAN Flat woven fabric OCEAN

5E – Blanc	5F – Cream	5I – Linen	5D – Taupe	5H – Coal	5G – Curry	5P – Peach
5Q – Scarlet	5R – Aquamarin	5S – Denim	5T – Sage	5L – Silver	5J – Iron	5K – Night
5A – Ebony						

Flachgewebe WILLOW Flat woven fabric WILLOW

6O – Champagne	6C – Granola	6F – Shadow	6I – Opal	6L – Sapphire	6B – Powder	6A – Bronze
6H – Granite	6E – Green Smoke	6D – Horizon	6G – Merlot	6J – Chestnut	6K – Russet	6N – Forest
6M – Crown Blue						

Beispielartikel Sample articles

Garderobenbänke cloak room benches		2R Elemente* elements*		2,5R Elemente* elements*		3R Elemente* elements*		3,5R Elemente* elements*		4R Elemente* elements*										
B H T	W H D	60 33 40	105 33 40	105 50 40	60 50 40	45 77 40	105 77 30	60 77 30	45 94 30	60 94 30	75 94 30	45 112 30	60 112 30	60 112 30	75 112 40	45 129 30	60 129 30	60 147 30	75 147 30	
Breite	width	75-90	105-150	105-120	75-120	60-75	105-135	75-90	60-90	75-90	90	60-90	75-90	90	60-90	75-90	60-75	60-75	75-90	90

5R Elem.* elem.*		6R Elemente* elements*		0,5R Hängeel.* hang. e.*		1R Hängeelemente* hanging elements*		1,5R Hängeelemente* hanging elements*		2R Hängeelemente* hanging elements*		2,5R Hängeelemente* hanging elements*					
B H T	W H D	45 182 40	45 217 40	75 217 40	75 217 48	75 217 40	90 217 40	79x79 217 40	45 21 40	60 21 40	105 21 40	60 56 40	105 56 40	45 74 30	105 74 30	60 91 30	75 91 30
Breite	width	60	60	60	90	90	90	79x79	75-90	75-90	120-150	75-90	120-150	60-75	60-75	75-90	90

Hängeelemente* hanging elements* 3R		Wandspiegel pier glasses 2R		Spiegelpaneele mirrors panels 2,5R		6R Paneele panels		Korpusfüße // carcass feet		Abdeckblätter cover sheets modern		Wangen side plates		Ecklösung edge solu.		Zwischenbaub. intermed. floors 27-120 cm		Innenschub. interior dr.		Schuhrost shoe tray	
B H T	W H D	38 109 30	60 126 30	90 74-91 4	45 217 4	60 217 4	60 217 30	15 194 13	90 17 30/40				3 max.428	33x33 - 26				27,1-123 42			
Breite	width	45-60	75-90	60-240	60	45	45-120		45-270				T D36	42x42 - 26				T D34			

* Auch in Komforttiefe 40cm erhältlich - Alle Angaben in cm - Für einen vollständigen Überblick über alle lieferbaren Typen wenden Sie sich bitte an den Fachhandel - Abweichung im Design, in technischer Ausführung und Druckfehler vorbehalten; Grundlage aller Lieferungen ist unsere Preis-/Typenliste. *Also available in comfort depth of 40cm - All specifications in cm - For a complete overview of all available types please contact an authorised dealer - Subject to changes in design, technical execution and printing errors. All deliveries based on our price/type list.

Alle Leuchten enthalten LED-Lampen, die innerhalb der Energieklasse E bis F liegen. Die LED-Lampen können nicht ausgetauscht werden. Each lamp is equipped with energy class E to F LEDs. The LEDs cannot be replaced.





Ihr Schuhportfolio findet in den verschiedenen Schränken ausreichend Stauraum. Im Kipper in Schuhkörben oder auf -rosten, oder wie in der Bank gezeigt auf einer Schutzmatte. Statten Sie Ihre Schränke ganz nach Ihren Wünschen aus.

The various cupboards offer plenty of storage space for your shoe collection: on the tilted shelf in shoe baskets, on shoe racks or without accessories as shown in the bench. Fill your cupboards in line with your precise wishes.



Auch als Designelement sind die Garderobenstangen und -haken schöne Details.
The hanging rails and hooks are also beautiful details as design features.



Die Einteilung hilft Ihren Alltag zu organisieren.
The arrangement helps in organising your daily life.



rmw-wohnmobel.de

RMW Wohnmöbel GmbH & Co. KG
Karl-Schiller-Straße 5 | 33397 Rietberg
GERMANY

